



GRIP 본사 ((주)진성유로텍)
서울특별시 금천구 가산디지털2로 14 817호.(대륭테크노타운 12차)

GRIP Factory
경기도 부천시 석천로 397 201동 B101호.
Tel.+82 32 624 0907~8
Fax.+82 32 624 0909
gripperperfect@gmail.com

www.gripkorea.com

HYDRO-SWISS TURN

스위스타입 머신 정밀 공구홀딩 솔루션.



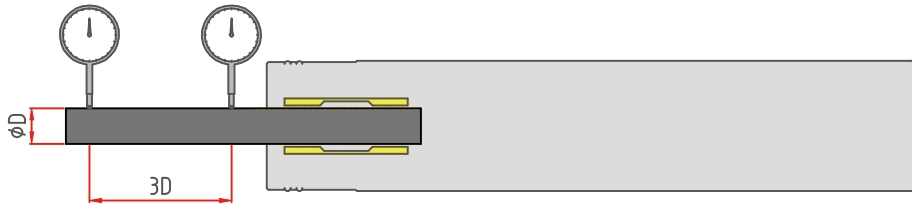
1 less than
micron



HYDRO-SWISS TURN

최고의 정밀함.

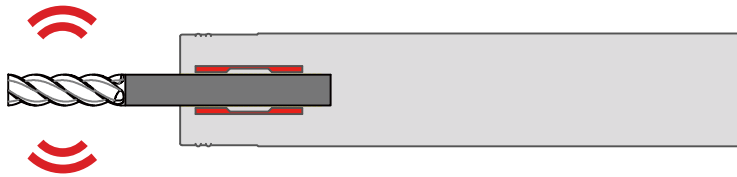
항상 동일하게 정밀한 런아웃을 보증.



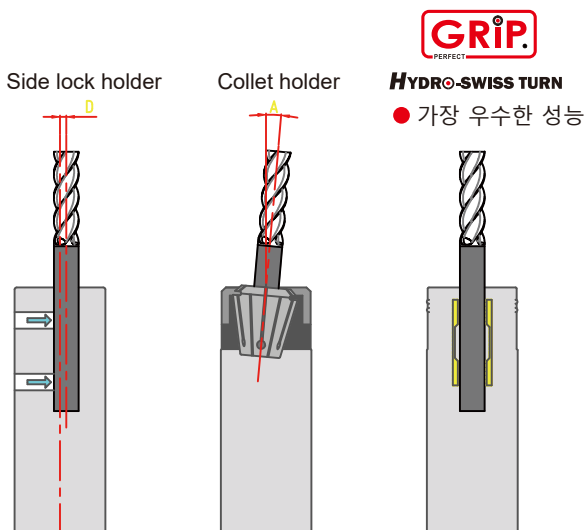
Standard type 0.003 T.I.R
UP type 0.001 T.I.R

바이브레이션 댐핑 기능.

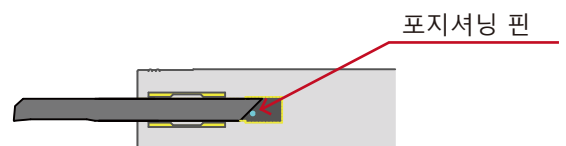
유압척 사용시 홀더의 댐핑효과로 공구 수명 증가.



유압척과 다른 척과의 비교.



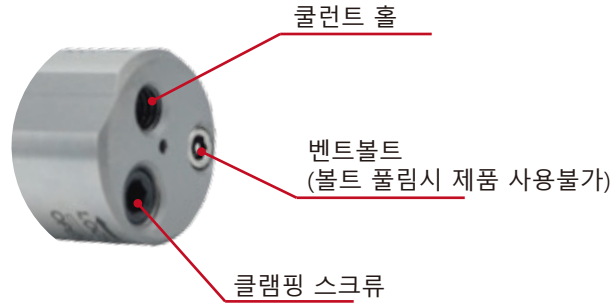
포지셔닝 핀으로 정확한 위치에 보링바를 위치 시켜 정밀한 작업 가능.



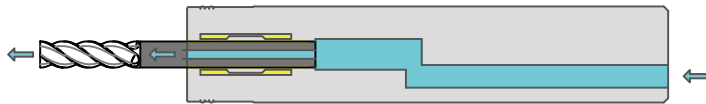
1 less than micron



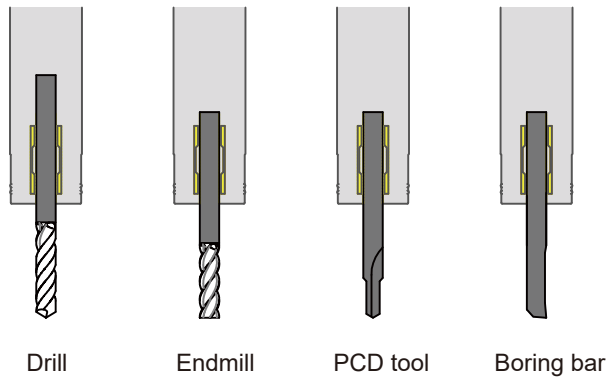
== 쉽고 편한 유압클램핑 시스템.



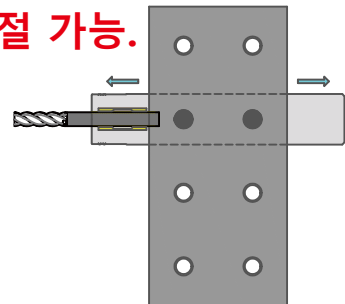
== 고압쿨러트 시스템.



== 다양한 작업가능.



== 쉽고 편한 홀더 길이조절 가능.



Front Type



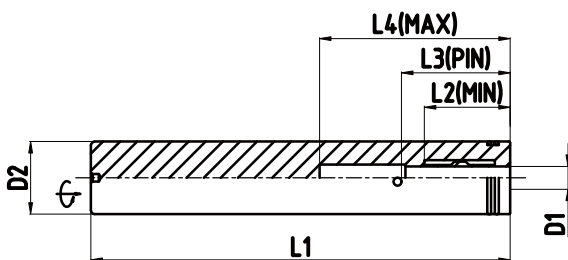
≡ Dimensions(mm)

ST19.05	D1	D2	D3	L1	L2	L3	L4	L5	Shape	Wrench	Type of machine
ST19.05-GST3-110	3	19.05	-	110	17.5	24	40	-		TR-3.0	C/ M16/ L20
ST19.05-GST4-110	4	19.05	-	110	21	26	40	-		TR-3.0	
ST19.05-GST6-110	6	19.05	-	110	23	29	52	-		TR-3.0	
ST19.05-GST8-110	8	19.05	-	110	28	34	52	-		TR-3.0	

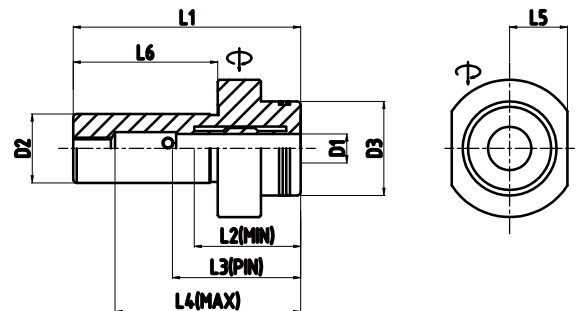
ST25.4	D1	D2	D3	L1	L2	L3	L4	L5	Shape	Wrench	Type of machine
ST25.4-GST3-110	3	25.4	-	110	17.5	24	40	-		TR-4.0	C/ M/ L32
ST25.4-GST4-110	4	25.4	-	110	21	26	40	-		TR-4.0	
ST25.4-GST6-110	6	25.4	-	110	23	29	52	-		TR-4.0	
ST25.4-GST8-110	8	25.4	-	110	28	34	52	-		TR-4.0	
ST25.4-GST10-110	10	25.4	-	110	29.5	36	55	-		TR-4.0	
ST25.4-GST12-110	12	25.4	-	110	31.5	38	58	-		TR-4.0	

- »h6 공차의 톨 사용을 권장합니다.
 - »내경Ø8과 Ø12 사이즈 제품은 유압슬리브를 사용할 수 있습니다.
 - »렌치는 따로 주문하셔야 합니다.
(GRIP 톨렌치 사용을 추천드립니다.)
 - »모든제품은 고압콜러트를 사용할 수 있습니다.(M6x1.0P)
 - »다양한 사이즈와 스페셜 디자인으로 제작이 가능합니다.
- ⚠️ 최소 공구 삽입길이를 준수해야 합니다.

SWISS TURN



ST19.05/ ST25.4



ST19.05

Back Type

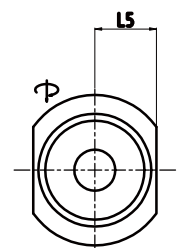
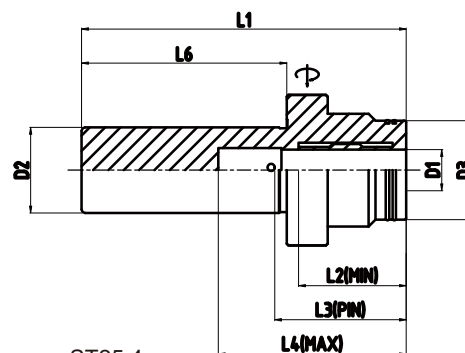
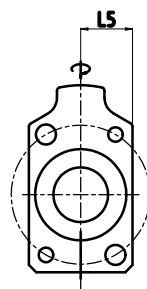
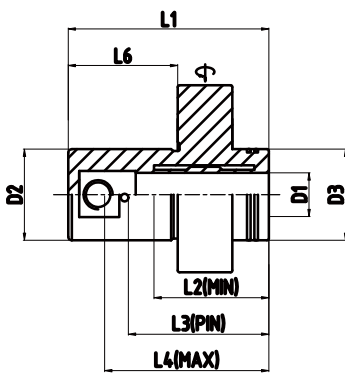
Citizen

≡ Dimensions(mm)

ST19.05	D1	D2	D3	L1	L2	L3	L4	L5	L6	Wrench	Type of machine
ST19.05-GST3-40/63	3	19.05	20	63	17.5	24	53	13.5	40	TR-4.0	
ST19.05-GST4-40/63	4	19.05	22	63	21	26	53	14	40	TR-4.0	
ST19.05-GST6-40/63	6	19.05	24	63	23	29	53	15	40	TR-4.0	C/ M16/ L20
ST19.05-GST8-40/63	8	19.05	26	63	28	34	53	16	40	TR-4.0	
ST19.05-GST10-40/63	10	19.05	28	63	29.5	36	53	17	40	TR-4.0	

ST25	D1	D2	D3	L1	L2	L3	L4	L5	L6	Wrench	Type of machine
ST25-GST4-30/55	4	25	25	55	21	26	45	14.2	30	TR-4.0	
ST25-GST6-30/55	6	25	25	55	23	29	45	14.2	30	TR-4.0	
ST25-GST8-30/55	8	25	25	55	28	34	45	14.2	30	TR-4.0	C/ L/ M20/32
ST25-GST10-30/55	10	25	25	55	29.5	36	45	14.2	30	TR-4.0	
ST25-GST12-30/55	12	25	25	55	31.5	38	45	14.2	30	TR-4.0	

ST25.4	D1	D2	D3	L1	L2	L3	L4	L5	L6	Wrench	Type of machine
ST25.4-GST4-40/75	4	25.4	19	75	21	26	46	14	40	TR-4.0	
ST25.4-GST6-40/75	6	25.4	20	75	23	29	51	15	40	TR-4.0	
ST25.4-GST8-40/75	8	25.4	23	75	28	36	51	16	40	TR-4.0	C/ L/ M32
ST25.4-GST10-40/75	10	25.4	27	75	29.5	36	56	17	40	TR-4.0	
ST25.4-GST12-40/75	12	25.4	29	75	31.5	38	56	18	40	TR-4.0	



SWISS TURN

Front Type

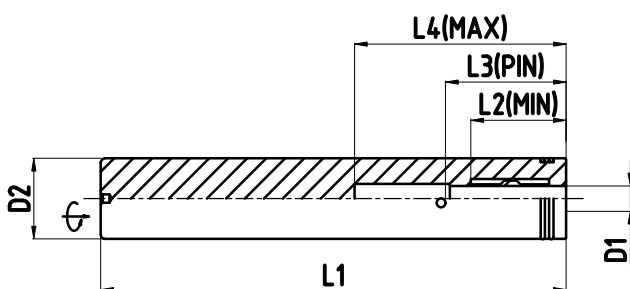


≡ Dimensions(mm)

ST16	D1	D2	D3	L1	L2	L3	L4	L5	Shape	Wrench	Type of machine
ST16-GST3-90	3	16	-	90	17.5	24	40	-		TR-3.0	SR-10J
ST16-GST3.175-90	3.175	16	-	90	17.5	24	40	-		TR-3.0	
ST16-GST4-90	4	16	-	90	21	26	40	-		TR-3.0	
ST16-GST6-90	6	16	-	90	23	29	37	-		TR-3.0	

ST22	D1	D2	D3	L1	L2	L3	L4	L5	Shape	Wrench	Type of machine
ST22-GST3-110	3	22	-	110	17.5	24	40	-		TR-4.0	12 / 20 SERIES
ST22-GST4-110	4	22	-	110	21	26	40	-		TR-4.0	
ST22-GST6-110	6	22	-	110	23	29	52	-		TR-4.0	
ST22-GST8-110	8	22	-	110	28	34	52	-		TR-4.0	
ST22-GST10-110	10	22	-	110	29.5	36	55	-		TR-4.0	

ST32	D1	D2	D3	L1	L2	L3	L4	L5	Shape	Wrench	Type of machine
ST32-GST3-110	3	32	-	110	17.5	24	40	-		TR-4.0	32 SERIES
ST32-GST4-110	4	32	-	110	21	26	40	-		TR-4.0	
ST32-GST6-110	6	32	-	110	23	29	52	-		TR-4.0	
ST32-GST8-110	8	32	-	110	28	34	52	-		TR-4.0	
ST32-GST10-110	10	32	-	110	29.5	36	55	-		TR-4.0	
ST32-GST12-110	12	32	-	110	31.5	38	58	-		TR-4.0	



ST16/ ST22/ ST32

Back Type



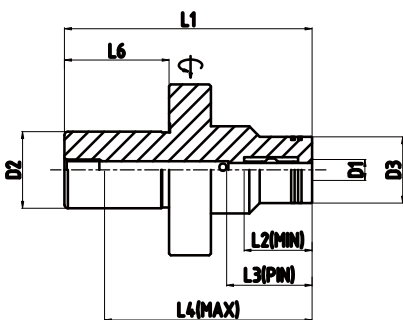
Dimensions(mm)

ST22	D1	D2	D3	L1	L2	L3	L4	L5	L6	Wrench	Type of machine
ST22-GST4-25/66A	4	22	19	66	21	25	56	14	25	TR-4.0	
ST22-GST6-25/66A	6	22	20	66	23	30	47	14	25	TR-4.0	
ST22-GST8-25/66A	8	22	23	66	28	34	51	15	25	TR-4.0	12/ 20 SERIES
ST22-GST10-25/66A	10	22	27	66	29.5	36	52	16	25	TR-4.0	
ST22-GST12-25/66A	12	22	29	66	31.5	42	52	17.25	25	TR-4.0	

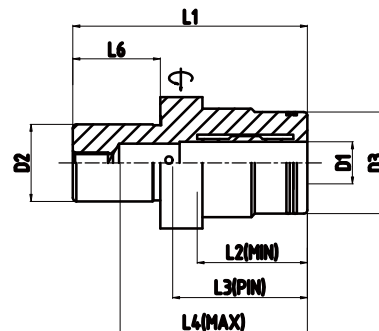
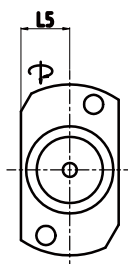
ST22	D1	D2	D3	L1	L2	L3	L4	L5	L6	Wrench	Type of machine
ST22-GST4-25/66B	4	22	19	66	21	25	56	16.25	25	TR-4.0	
ST22-GST6-25/66B	6	22	20	66	23	30	47	16.25	25	TR-4.0	
ST22-GST8-25/66B	8	22	23	66	28	34	51	16.25	25	TR-4.0	SW20/ SR20IV
ST22-GST10-25/66B	10	22	27	66	29.5	36	52	16.25	25	TR-4.0	
ST22-GST12-25/66B	12	22	29	66	31.5	42	52	17.25	25	TR-4.0	

- »h6 공차의 톨 사용을 권장합니다.
- »내경Ø8과 Ø12 사이즈 제품은 유압슬리브를 사용할 수 있습니다.
- »렌치는 따로 주문하셔야 합니다.
(GRIP 톨크렌치 사용을 추천드립니다.)
- »모든제품은 고압쿨러트를 사용할 수 있습니다.(M6x1.0P)
- »다양한 사이즈와 스페셜 디자인으로 제작이 가능합니다.

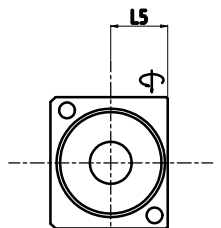
⚠️ 최소 공구 삽입길이를 준수해야 합니다.



ST22-A



ST22-B



SWISS TURN

Front Type

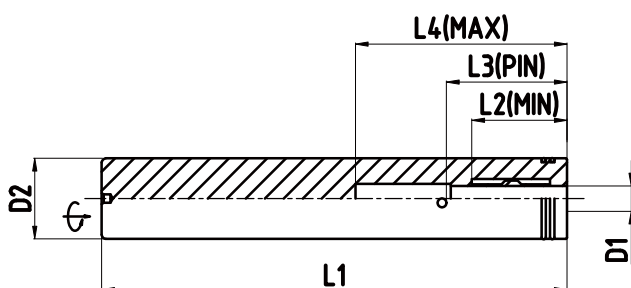


≡ Dimensions(mm)

ST16	D1	D2	D3	L1	L2	L3	L4	L5	Shape	Wrench	Type of machine
ST16-GST3-50	3	16	-	50	17.5	24	28	-		TR-3.0	P01 /P03
ST16-GST3.175-50	3.175	16	-	50	17.5	24	28	-		TR-3.0	
ST16-GST4-50	4	16	-	50	21	26	28	-		TR-3.0	

ST20	D1	D2	D3	L1	L2	L3	L4	L5	Shape	Wrench	Type of machine
ST20-GST3-110	3	20	-	110	17.5	24	40	-		TR-3.0	BO12 /20 /S20 SERIES
ST20-GST4-110	4	20	-	110	21	26	40	-		TR-3.0	
ST20-GST6-110	6	20	-	110	23	29	52	-		TR-3.0	
ST20-GST8-110	8	20	-	110	28	34	52	-		TR-3.0	

ST25	D1	D2	D3	L1	L2	L3	L4	L5	Shape	Wrench	Type of machine
ST25-GST3-110	3	25	-	110	17.5	24	40	-		TR-4.0	32 SERIES
ST25-GST4-110	4	25	-	110	21	26	40	-		TR-4.0	
ST25-GST6-110	6	25	-	110	23	29	52	-		TR-4.0	
ST25-GST8-110	8	25	-	110	28	34	52	-		TR-4.0	
ST25-GST10-110	10	25	-	110	29.5	36	55	-		TR-4.0	
ST25-GST12-110	12	25	-	110	31.5	38	58	-		TR-4.0	



ST16/ ST20/ ST25

Back Type

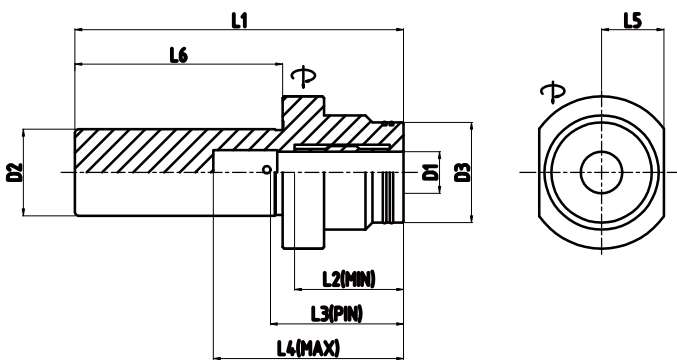


≡ Dimensions(mm)

ST20	D1	D2	D3	L1	L2	L3	L4	L5	L6	Wrench	Type of machine
ST20-GST4-40/75	4	20	19	75	21	26	46	14	40	TR-4.0	BO12 /20 /S20 SERIES
ST20-GST6-40/75	6	20	20	75	23	29	51	15	40	TR-4.0	
ST20-GST8-40/75	8	20	23	75	28	36	51	16	40	TR-4.0	
ST20-GST10-40/75	10	20	27	75	29.5	36	56	17	40	TR-4.0	

ST25	D1	D2	D3	L1	L2	L3	L4	L5	L6	Wrench	Type of machine
ST25-GST4-60/95	4	25	19	95	21	26	46	14	60	TR-4.0	32 SERIES
ST25-GST6-60/95	6	25	20	95	23	29	51	15	60	TR-4.0	
ST25-GST8-60/95	8	25	23	95	28	34	51	16	60	TR-4.0	
ST25-GST10-60/95	10	25	27	95	29.5	36	56	17	60	TR-4.0	
ST25-GST12-60/95	12	25	29	95	31.5	38	56	18	60	TR-4.0	

- »h6 공차의 톨 사용을 권장합니다.
 - »내경Ø8과 Ø12 사이즈 제품은 유압슬리브를 사용할 수 있습니다.
 - »렌치는 따로 주문하셔야 합니다.
(GRIP 토크렌치 사용을 추천드립니다.)
 - »모든제품은 고압쿨러트를 사용할 수 있습니다.(M6x1.0P)
 - »다양한 사이즈와 스페셜 디자인으로 제작이 가능합니다.
- ⚠️ 최소 공구 삽입길이를 준수해야 합니다.






















ST20/ ST25

Front Type

TORNOS

 Dimensions(mm)

ST16	D1	D2	D3	L1	L2	L3	L4	L5	Shape	Wrench	Type of machine
ST16-GST3-50	3	16	-	50	17.5	24	28	-		TR-3.0	MICRO 7/8
ST16-GST3.175-50	3.175	16	-	50	17.5	24	28	-		TR-3.0	
ST16-GST4-50	4	16	-	50	21	26	28	-		TR-3.0	
ST16-GST3-90	3	16	-	90	17.5	24	40	-		TR-3.0	SWISS NANO SERIES
ST16-GST3.175-90	3.175	16	-	90	17.5	24	40	-		TR-3.0	
ST16-GST4-90	4	16	-	90	21	26	40	-		TR-3.0	
ST16-GST6-90	6	16	-	90	23	29	37	-		TR-3.0	
ST20											
ST20-GST3-110	3	20	-	110	17.5	24	40	-		TR-3.0	GAMMA20
ST20-GST4-110	4	20	-	110	21	26	40	-		TR-3.0	
ST20-GST6-110	6	20	-	110	23	29	52	-		TR-3.0	
ST20-GST8-110	8	20	-	110	28	34	52	-		TR-3.0	
ST22											
ST22-GST3-110	3	22	-	110	17.5	24	40	-		TR-4.0	DELTA 20 GAMMA 20
ST22-GST4-110	4	22	-	110	21	26	40	-		TR-4.0	
ST22-GST6-110	6	22	-	110	23	29	52	-		TR-4.0	
ST22-GST8-110	8	22	-	110	28	34	52	-		TR-4.0	
ST22-GST10-110	10	22	-	110	29.5	36	55	-		TR-4.0	
ST25											
ST25-GST3-110	3	25	-	110	17.5	24	40	-		TR-4.0	DECO (7/10/13/20)
ST25-GST4-110	4	25	-	110	21	26	40	-		TR-4.0	
ST25-GST6-110	6	25	-	110	23	29	52	-		TR-4.0	
ST25-GST8-110	8	25	-	110	28	34	52	-		TR-4.0	
ST25-GST10-110	10	25	-	110	29.5	36	55	-		TR-4.0	
ST25-GST12-110	12	25	-	110	31.5	38	58	-		TR-4.0	

Back Type

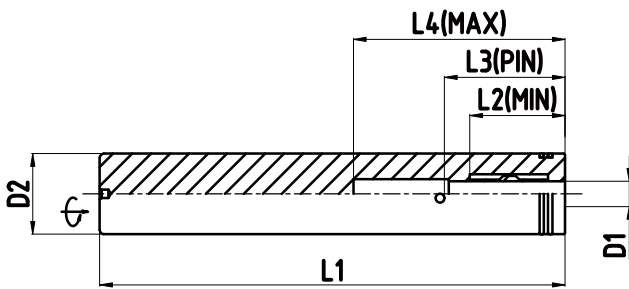
TORNOS

≡ Dimensions(mm)

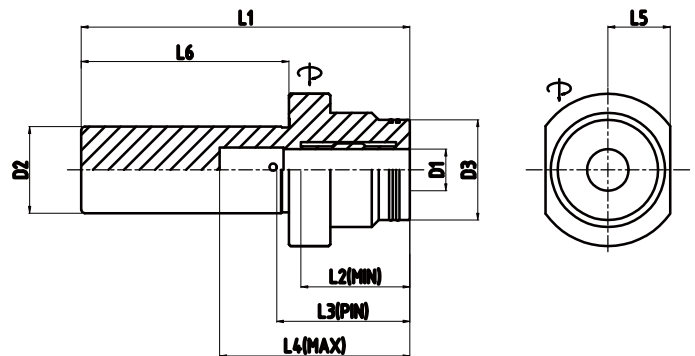
ST20	D1	D2	D3	L1	L2	L3	L4	L5	L6	Wrench	Type of machine
ST20-GST4-40/75	4	20	19	75	21	26	46	14	40	TR-4.0	GT13/ GT26 GAMMA20
ST20-GST6-40/75	6	20	20	75	23	29	51	15	40	TR-4.0	
ST20-GST8-40/75	8	20	23	75	28	36	51	16	40	TR-4.0	
ST20-GST10-40/75	10	20	27	75	29.5	36	56	17	40	TR-4.0	

ST25	D1	D2	D3	L1	L2	L3	L4	L5	L6	Wrench	Type of machine
ST25-GST4-60/95	4	25	19	95	21	26	46	14	60	TR-4.0	DECO (7/10/13/20)
ST25-GST6-60/95	6	25	20	95	23	29	51	15	60	TR-4.0	
ST25-GST8-60/95	8	25	23	95	28	34	51	16	60	TR-4.0	
ST25-GST10-60/95	10	25	27	95	29.5	36	56	17	60	TR-4.0	
ST25-GST12-60/95	12	25	29	95	31.5	38	56	18	60	TR-4.0	

- »h6 공차의 톨 사용을 권장합니다.
 - »내경Ø8과 Ø12 사이즈 제품은 유압슬리브를 사용할 수 있습니다.
 - »렌치는 따로 주문하셔야 합니다.
(GRIP 토크렌치 사용을 추천드립니다.)
 - »모든제품은 고압쿨러트를 사용할 수 있습니다.(M6x1.0P)
 - »다양한 사이즈와 스페셜 디자인으로 제작이 가능합니다.
- ⚠ 최소 공구 삽입길이를 준수해야 합니다.



ST16/ ST20/ ST22/ ST25



ST20/ ST25

SWISS TURN

Front Type

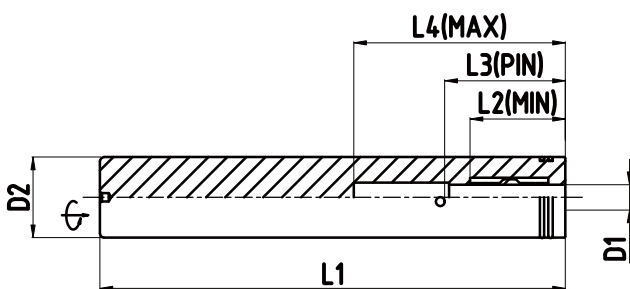


Dimensions(mm)

ST20	D1	D2	D3	L1	L2	L3	L4	L5	Shape	Wrench	Type of machine
ST20-GST3-110	3	20	-	110	17.5	24	40	-		TR-3.0	SL12H
ST20-GST4-110	4	20	-	110	21	26	40	-		TR-3.0	
ST20-GST6-110	6	20	-	110	23	29	52	-		TR-3.0	
ST20-GST8-110	8	20	-	110	28	34	52	-		TR-3.0	

ST25	D1	D2	D3	L1	L2	L3	L4	L5	Shape	Wrench	Type of machine
ST25-GST3-110	3	25	-	110	17.5	24	40	-		TR-4.0	20 SERIES
ST25-GST4-110	4	25	-	110	21	26	40	-		TR-4.0	
ST25-GST6-110	6	25	-	110	23	29	52	-		TR-4.0	
ST25-GST8-110	8	25	-	110	28	34	52	-		TR-4.0	
ST25-GST10-110	10	25	-	110	29.5	36	55	-		TR-4.0	
ST25-GST12-110	12	25	-	110	31.5	38	58	-		TR-4.0	

ST32	D1	D2	D3	L1	L2	L3	L4	L5	Shape	Wrench	Type of machine
ST32-GST3-110	3	32	-	110	17.5	24	40	-		TR-4.0	32 SERIES
ST32-GST4-110	4	32	-	110	21	26	40	-		TR-4.0	
ST32-GST6-110	6	32	-	110	23	29	52	-		TR-4.0	
ST32-GST8-110	8	32	-	110	28	34	52	-		TR-4.0	
ST32-GST10-110	10	32	-	110	29.5	36	55	-		TR-4.0	
ST32-GST12-110	12	32	-	110	31.5	38	58	-		TR-4.0	



ST20/ ST25/ ST32

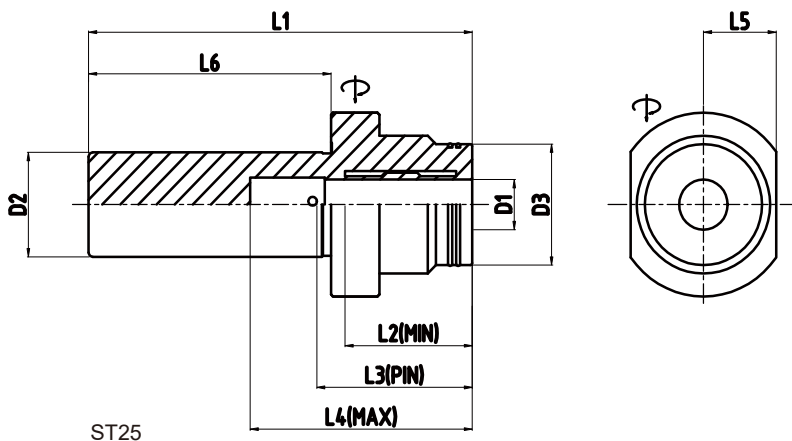
Back Type



≡ Dimensions(mm)

ST25	D1	D2	D3	L1	L2	L3	L4	L5	L6	Wrench	Type of machine
ST25-GST4-60/95	4	25	19	95	21	26	46	14	60	TR-4.0	12/ 20/ 32 SERIES
ST25-GST6-60/95	6	25	20	95	23	29	51	15	60	TR-4.0	
ST25-GST8-60/95	8	25	23	95	28	34	51	16	60	TR-4.0	
ST25-GST10-60/95	10	25	27	95	29.5	36	56	17	60	TR-4.0	
ST25-GST12-60/95	12	25	29	95	31.5	38	56	18	60	TR-4.0	

- »h6 공차의 톨 사용을 권장합니다.
 - »내경Ø8과 Ø12 사이즈 제품은 유압슬리브를 사용할 수 있습니다.
 - »렌치는 따로 주문하셔야 합니다.
(GRIP 톨렌치 사용을 추천드립니다.)
 - »모든제품은 고압쿨러트를 사용할 수 있습니다.(M6x1.0P)
 - »다양한 사이즈와 스페셜 디자인으로 제작이 가능합니다.
- ⚠ 최소 공구 삽입길이를 준수해야 합니다.



HYDRO-SWISS TURN

ST | Cylindrical

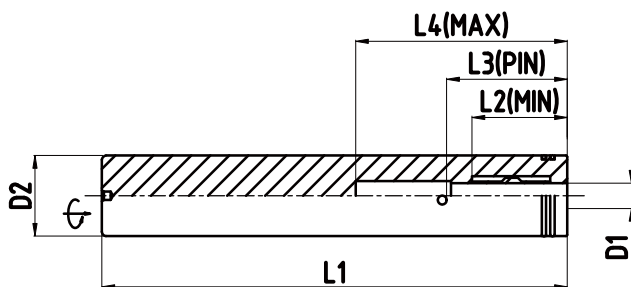
Front Type



≡ Dimensions(mm)

ST22	D1	D2	D3	L1	L2	L3	L4	L5	Shape	Wrench	Type of machine
ST22-GST3-110	3	22	-	110	17.5	24	40	-		TR-4.0	NN-20 SERIES
ST22-GST4-110	4	22	-	110	21	26	40	-		TR-4.0	
ST22-GST6-110	6	22	-	110	23	29	52	-		TR-4.0	
ST22-GST8-110	8	22	-	110	28	34	52	-		TR-4.0	
ST22-GST10-110	10	22	-	110	29.5	36	55	-		TR-4.0	

ST32	D1	D2	D3	L1	L2	L3	L4	L5	Shape	Wrench	Type of machine
ST32-GST3-110	3	32	-	110	17.5	24	40	-		TR-4.0	NN-32 SERIES
ST32-GST4-110	4	32	-	110	21	26	40	-		TR-4.0	
ST32-GST6-110	6	32	-	110	23	29	52	-		TR-4.0	
ST32-GST8-110	8	32	-	110	28	34	52	-		TR-4.0	
ST32-GST10-110	10	32	-	110	29.5	36	55	-		TR-4.0	
ST32-GST12-110	12	32	-	110	31.5	38	58	-		TR-4.0	



ST22/ ST32

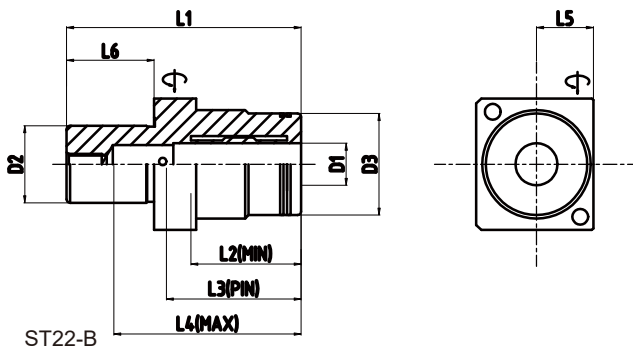
Back Type



≡ Dimensions(mm)

ST22	D1	D2	D3	L1	L2	L3	L4	L5	L6	Wrench	Type of machine
ST22-GST4-25/66B	4	22	19	66	21	25	56	16.25	25	TR-4.0	For common use
ST22-GST6-25/66B	6	22	20	66	23	30	47	16.25	25	TR-4.0	
ST22-GST8-25/66B	8	22	23	66	28	34	51	16.25	25	TR-4.0	
ST22-GST10-25/66B	10	22	27	66	29.5	36	52	16.25	25	TR-4.0	
ST22-GST12-25/66B	12	22	29	66	31.5	42	52	17.25	25	TR-4.0	

- »h6 공차의 톨 사용을 권장합니다.
 - »내경Ø8과 Ø12사이즈 제품은 유압슬리브를 사용할 수 있습니다.
 - »렌치는 따로 주문하셔야 합니다.
(GRIP 톨렌치 사용을 추천드립니다.)
 - »모든제품은 고압쿨러트를 사용할 수 있습니다.(M6x1.0P)
 - »다양한 사이즈와 스페셜 디자인으로 제작이 가능합니다.
- ⚠ 최소 공구 삽입길이를 준수해야 합니다.



Front Type



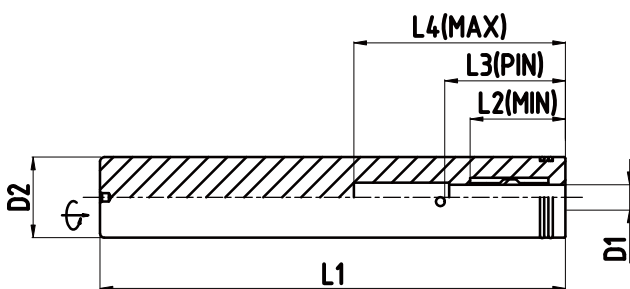
≡ Dimensions(mm)

ST19.05	D1	D2	D3	L1	L2	L3	L4	L5	Shape	Wrench	Type of machine
ST19.05-GST3-110	3	19.05	-	110	17.5	24	40	-		TR-3.0	Depending on Machine
ST19.05-GST4-110	4	19.05	-	110	21	26	40	-		TR-3.0	
ST19.05-GST6-110	6	19.05	-	110	23	29	52	-		TR-3.0	
ST19.05-GST8-110	8	19.05	-	110	28	34	52	-		TR-3.0	

ST25	D1	D2	D3	L1	L2	L3	L4	L5	Shape	Wrench	Type of machine
ST25-GST3-110	3	25	-	110	17.5	24	40	-		TR-4.0	Depending on Machine
ST25-GST4-110	4	25	-	110	21	26	40	-		TR-4.0	
ST25-GST6-110	6	25	-	110	23	29	52	-		TR-4.0	
ST25-GST8-110	8	25	-	110	28	34	52	-		TR-4.0	
ST25-GST10-110	10	25	-	110	29.5	36	55	-		TR-4.0	
ST25-GST12-110	12	25	-	110	31.5	38	58	-		TR-4.0	

ST32	D1	D2	D3	L1	L2	L3	L4	L5	Shape	Wrench	Type of machine
ST32-GST3-110	3	32	-	110	17.5	24	40	-		TR-4.0	Depending on Machine
ST32-GST4-110	4	32	-	110	21	26	40	-		TR-4.0	
ST32-GST6-110	6	32	-	110	23	29	52	-		TR-4.0	
ST32-GST8-110	8	32	-	110	28	34	52	-		TR-4.0	
ST32-GST10-110	10	32	-	110	29.5	36	55	-		TR-4.0	
ST32-GST12-110	12	32	-	110	31.5	38	58	-		TR-4.0	

SWISS TURN



ST19.05/ ST22/ ST32

Back Type

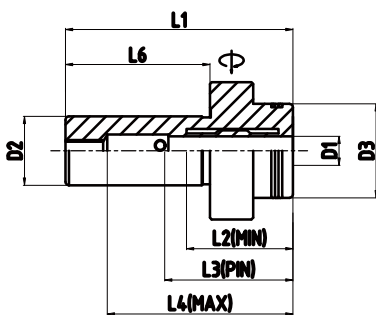
NEXTURN
SWISS TURN LEADER

Dimensions(mm)

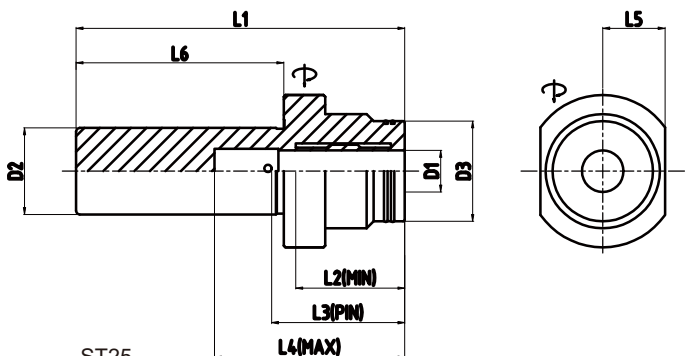
ST19.05	D1	D2	D3	L1	L2	L3	L4	L5	L6	Wrench	Type of machine
ST19.05-GST3-40/63	3	19.05	20	63	17.5	24	53	13.5	40	TR-4.0	Depending on Machine
ST19.05-GST4-40/63	4	19.05	22	63	21	26	53	14	40	TR-4.0	
ST19.05-GST6-40/63	6	19.05	24	63	23	29	53	15	40	TR-4.0	
ST19.05-GST8-40/63	8	19.05	26	63	28	34	53	16	40	TR-4.0	
ST19.05-GST10-40/63	10	19.05	28	63	29.5	36	53	17	40	TR-4.0	

ST25	D1	D2	D3	L1	L2	L3	L4	L5	L6	Wrench	Type of machine
ST25-GST4-60/95	4	25	19	95	21	26	46	14	60	TR-4.0	Depending on Machine
ST25-GST6-60/95	6	25	20	95	23	29	51	15	60	TR-4.0	
ST25-GST8-60/95	8	25	23	95	28	34	51	16	60	TR-4.0	
ST25-GST10-60/95	10	25	27	95	29.5	36	56	17	60	TR-4.0	
ST25-GST12-60/95	12	25	29	95	31.5	38	56	18	60	TR-4.0	

- »h6 공차의 툴 사용을 권장합니다.
 - »내경Ø8과 Ø12사이즈 제품은 유압슬리브를 사용할 수 있습니다.
 - »렌치는 따로 주문하셔야 합니다.
(GRIP 토크렌치 사용을 추천드립니다.)
 - »모든제품은 고압쿨러트를 사용할 수 있습니다.(M6x1.0P)
 - »다양한 사이즈와 스페셜 디자인으로 제작이 가능합니다.
- ⚠️ 최소 공구 삽입길이를 준수해야 합니다.



ST19.05



ST25

SWISS TURN

Options

하이드로 슬리브



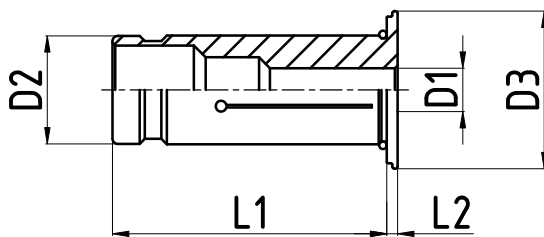
쿨러트 타입

Dimensions(mm)

OD8	D1	D2	D3	L1	L2	Kg.
OD8-3	3	8	12.5	35.5	2	0.1
OD8-4	4	8	12.5	35.5	2	0.1
OD8-5	5	8	12.5	35.5	2	0.1
OD8-6	6	8	12.5	35.5	2	0.1

OD12	D1	D2	D3	L1	L2	Kg.
OD12-3	3	12	19	45	2	0.1
OD12-4	4	12	19	45	2	0.1
OD12-5	5	12	19	45	2	0.1
OD12-6	6	12	19	45	2	0.1
OD12-7	7	12	19	45	2	0.1
OD12-8	8	12	19	45	2	0.1
OD12-9	9	12	19	45	2	0.1
OD12-10	10	12	19	45	2	0.1


- » 모든 틀샤크 사용가능 합니다.
- » 내부쿨러트 전용 슬리브 모든 제품 3xd 3Micron.
- » 내부쿨러트 공구에 적합 합니다.
- » 정밀한 작업에 추천 합니다.



OD8/ OD12

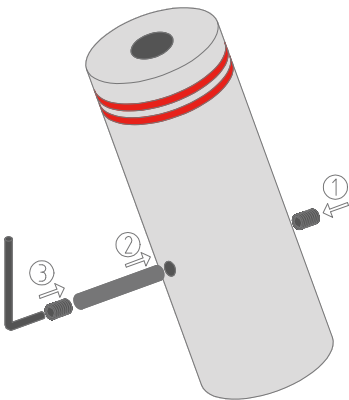
토크 렌치 (5.5Nm)



TR		Applied product
TR-3.0	3mm	ST16 / ST19.05/ ST20
TR-4.0	4mm	ST22/ ST25/ ST25.4 / ST32

»5.5Nm 토크.
 »일정한 토크 값으로 유압척 수명이 증가 합니다.

포지셔닝 핀 KIT



PP kit	Applied product
P2.5X8	ST16
P2.5X12	ST19.05 ST20
P2.5X14	ST22
P2.5X16	ST25 ST25.4 ST32

»Kit 구성품.
 -M3x0.5 3mm, Bolt x 4pcs.
 -Pin x 2pcs.
 -1.5mm L wrench X 1pcs.